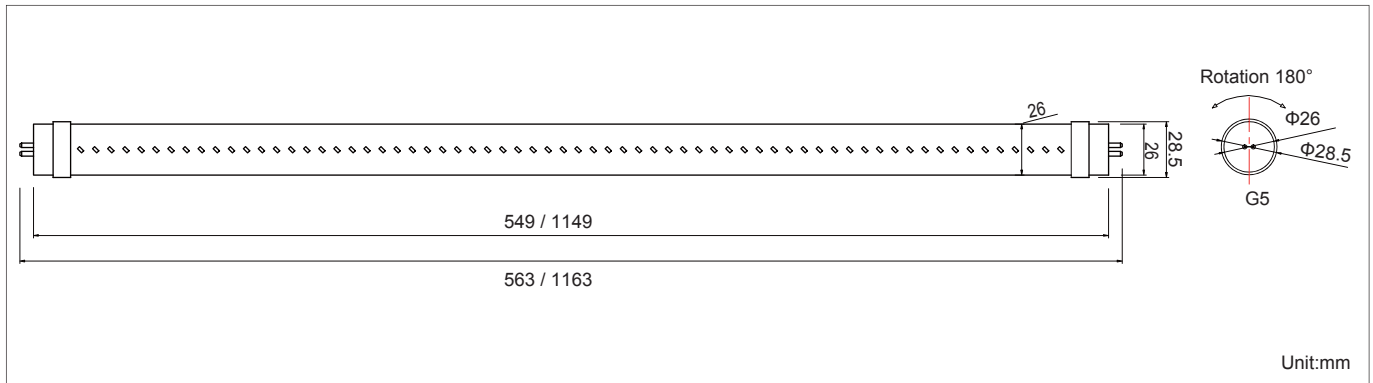
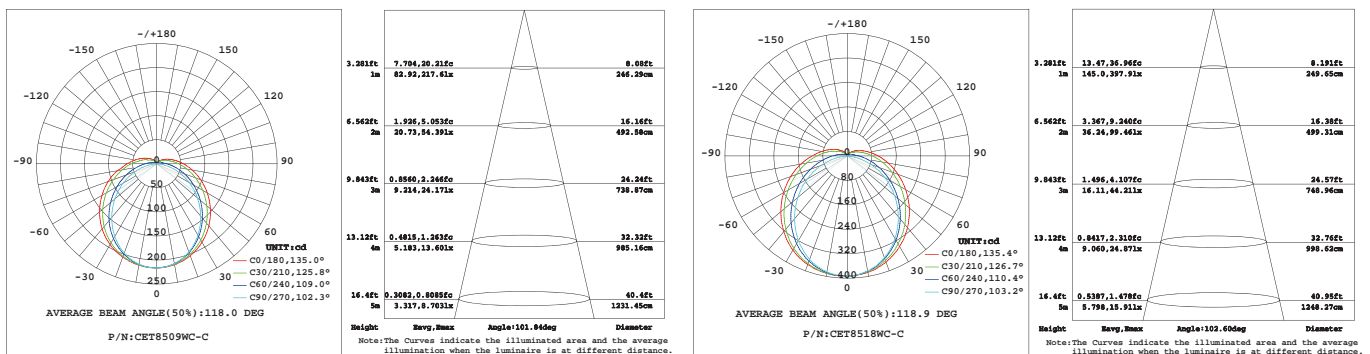




Product Dimensions:



Luminous Intensity Distribution Diagram & Lux Distribution:



Manufacturing Quality Standard:

- ISO 9001:2008

LED Luminaire Standard:

- EN/IEC 60598-1
- EN/IEC 60598-2-1
- EN/IEC 60598-2-2
- EN/IEC 60529
- EN/IEC 62471-2
- IEC 62612
- EN/IEC 60968
- IEC 62560
- EN/IEC 60061-1
- EN 13032-1
- EN 13032-2
- EN/IEC 62471
- EN/IEC 60825
- EN 60061-1

Electronic Driver Standard:

- EN/IEC 61347-1
- EN/IEC 61347-2-13
- EN/IEC 62384
- EN/IEC 61000-3-2
- EN/IEC 61000-3-3
- EN/IEC 61547
- EN 55015(CISPR 15)

LED Module Standard:

- IEC 62031
- IEC 60838-2-2

LED Light Photometric Standard:

- CIE; TM14; LM-75; IES; LDT; CEN; CIB

RoHS Standard:

- EPA3050B
- EN 1122B
- IEC 62321
- EPA3052
- EPA3060A
- EPA7196A
- EPA3540C
- EPA8270D

LED Luminaire Performance:

- LM-80-08
- Switching cycle:100,000x



## Features:

- 9W can replace fluorescent tube T5 14W
- 13W/18W can replace fluorescent tube T5 28W
- High pressure die-casting aluminum housing with polycarbonate cover
- High power factor and power efficiency design
- Optional 1~10V dimmable power supply
- Optional DMX512 dimmable power supply

## Applications:

- Office
- School
- Warehouse
- Meeting Room
- Shops and boutiques



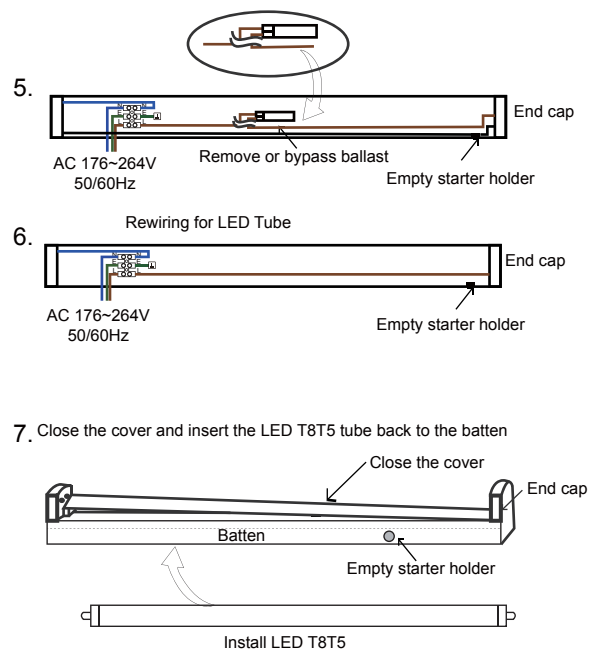
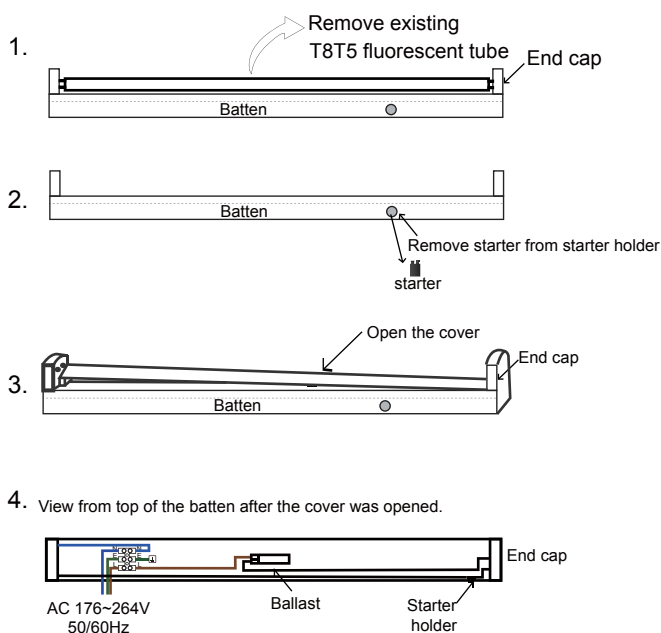
## Specifications:

Part No	Size (mm)	CCT (K)	Beam Angle	Color Rendering Index	Luminaire Luminous Flux (lm)	Luminaire Efficacy (lm/w)	Power (w)	Net Weight (g)
CET8509WW-C	549	3000	120°	80	860	95	9	150
CET8509WN-C	549	4000	120°	80	900	100	9	150
CET8509WC-C	549	6500	120°	80	990	110	9	150
CET8513WW-C	1149	3000	120°	80	1240	95	13	450
CET8513WN-C	1149	4000	120°	80	1300	100	13	450
CET8513WC-C	1149	6500	120°	80	1430	110	13	450
CET8518WW-C	1149	3000	120°	80	1710	95	18	450
CET8518WN-C	1149	4000	120°	80	1800	100	18	450
CET8518WC-C	1149	6500	120°	80	1980	110	18	450

## Products Characteristic:

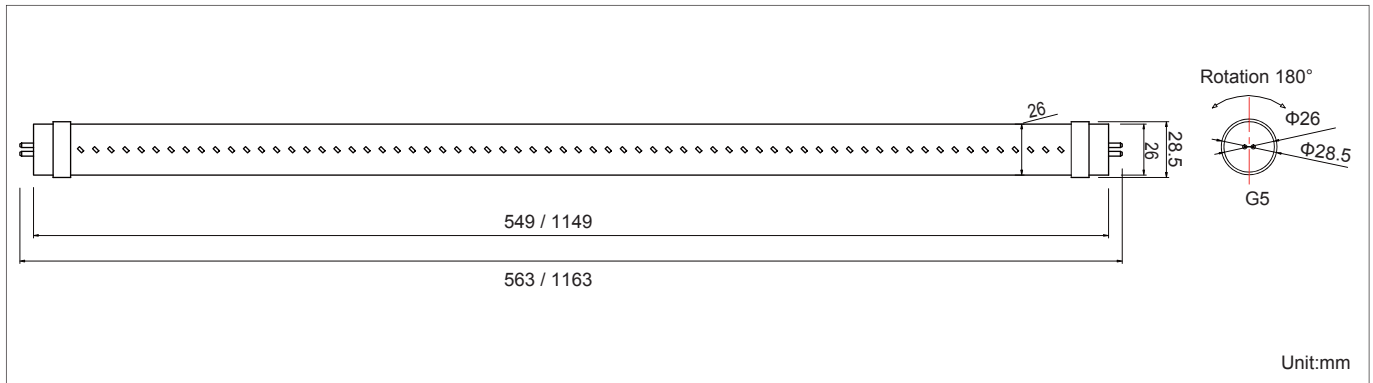
- Input Voltage: AC176~264V 50/60Hz
- Power Factor: 0.9
- Operating Temperature: -20~50°C
- LED Source: Taiwan SMD LED / Samsung
- Life Time: 50,000 Hours (Ta=40°C)
- RAL Code: 9006 white aluminium
- Finishing Materials: Aluminum and Clear Polycarbonate

## Installation Manual:

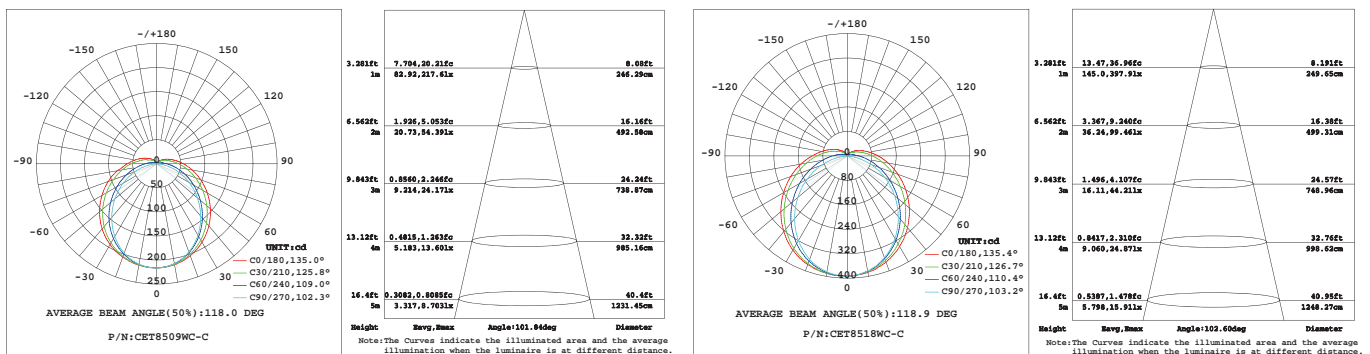




二維尺寸圖:



發光強度分布圖(配光圖)和照度分布:



生產質量管理認證:

- ISO 9001:2008

LED燈具安全認證標準:

- EN/IEC 60598-1
- EN/IEC 60598-2-1
- EN/IEC 60598-2-2
- EN/IEC 60529
- EN/IEC 62471-2
- IEC 62612
- EN/IEC 60968
- IEC 62560
- EN/IEC 60061-1
- EN 13032-1
- EN 13032-2
- EN/IEC 62471
- EN/IEC 60825
- EN 60061-1

LED電子驅動器的安全認證標準:

- EN/IEC 61347-1
- EN/IEC 61347-2-13
- EN/IEC 62384
- EN/IEC 61000-3-2
- EN/IEC 61000-3-3
- EN/IEC 61547
- EN 55015(CISPR 15)

LED模組認證標準:

- IEC 62031
- IEC 60838-2-2

LED燈國際照明光學標準:

- CIE; TM14; LM-75; IES; LDT; CEN; CIB

RoHS環保認證標準:

- EPA3050B
- EN 1122B
- IEC 62321
- EPA3052
- EPA3060A
- EPA7196A
- EPA3540C
- EPA8270D

LED燈具可靠性標準:

- LM-80-08
- Switching cycle:100,000x



## 特點：

- 9W可取代熒光燈T5 14W
- 13W/18W可以取代熒光燈T5 28W
- 高壓壓鑄鋁外殼，聚碳酸酯蓋
- 高功率因數和功率效率的設計
- 可選1~10V可調電源
- 可選DMX512調光電源

## 應用：

- 辦公室
- 學校
- 倉庫
- 會議室
- 商店和精品店



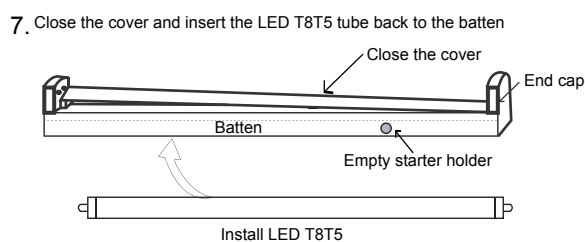
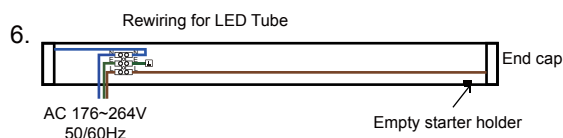
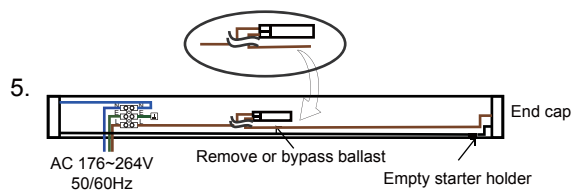
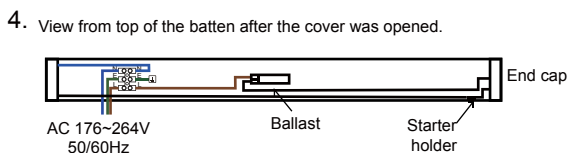
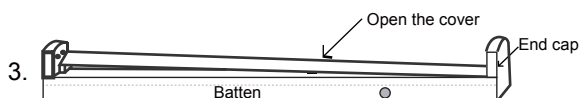
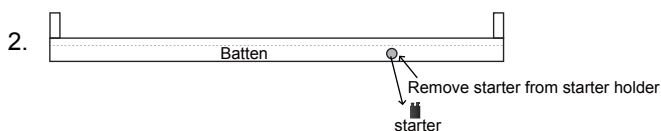
## 產品規格：

型號	尺寸 (mm)	色溫 (K)	光束角度	顯色指數	燈具光通量 (lm)	燈具功效 (lm/w)	功率 (w)	淨重 (g)
CET8509WW-C	549	3000	120°	80	860	95	9	150
CET8509WN-C	549	4000	120°	80	900	100	9	150
CET8509WC-C	549	6500	120°	80	990	110	9	150
CET8513WW-C	1149	3000	120°	80	1240	95	13	450
CET8513WN-C	1149	4000	120°	80	1300	100	13	450
CET8513WC-C	1149	6500	120°	80	1430	110	13	450
CET8518WW-C	1149	3000	120°	80	1710	95	18	450
CET8518WN-C	1149	4000	120°	80	1800	100	18	450
CET8518WC-C	1149	6500	120°	80	1980	110	18	450

## 產品特性：

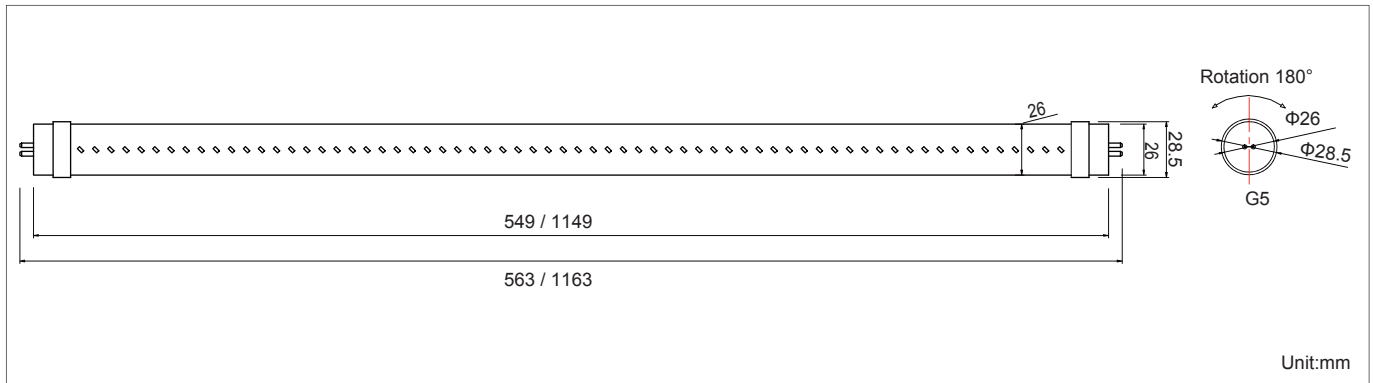
- 輸入電壓：AC176~264V50/60Hz
- 功率因數：0.9
- 工作溫度：-20~50°C
- LED光源：臺灣SMD LED /三星
- 壽命：50,000小時(40°C)
- RAL編號：9006銀
- 外殼材料：鋁和透明的聚碳酸酯

## 安裝手冊：

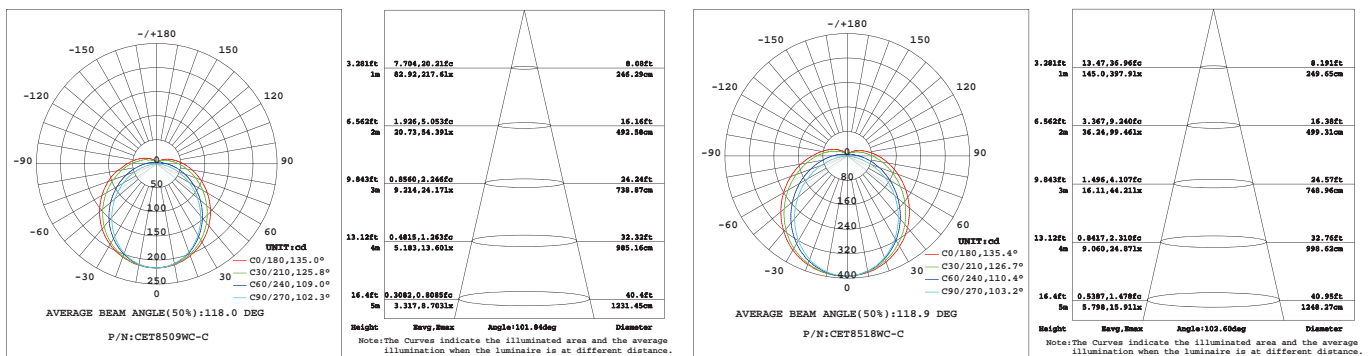




二维尺寸图:



发光强度分布图(配光图)和照度分布:



生产质量管理认证:

- ISO 9001:2008

LED灯具安全认证标准:

- EN/IEC 60598-1
- EN/IEC 60598-2-1
- EN/IEC 60598-2-2
- EN/IEC 60529
- EN/IEC 62471-2
- IEC 62612
- EN/IEC 60968
- IEC 62560
- EN/IEC 60061-1
- EN 13032-1
- EN 13032-2
- EN/IEC 62471
- EN/IEC 60825
- EN 60061-1

LED电子驱动器的安全认证标准:

- EN/IEC 61347-1
- EN/IEC 61347-2-13
- EN/IEC 62384
- EN/IEC 61000-3-2
- EN/IEC 61000-3-3
- EN/IEC 61547
- EN 55015(CISPR 15)

LED模组认证标准:

- IEC 62031
- IEC 60838-2-2

LED灯国际照明光学标准:

- CIE; TM14; LM-75; IES; LDT; CEN; CIB

RoHS环保认证标准:

- EPA3050B
- EN 1122B
- IEC 62321
- EPA3052
- EPA3060A
- EPA7196A
- EPA3540C
- EPA8270D

LED灯具可靠性标准:

- LM-80-08
- Switching cycle:100,000x



## 特点:

- 9W可取代荧光灯T5 14W
- 13W/18W可以取代荧光灯T5 28W
- 高压压铸铝外壳, 聚碳酸酯盖
- 高功率因数和功率效率的设计
- 可选1~10V可调电源
- 可选DMX512调光电源

## 应用:

- 办公室
- 学校
- 仓库
- 会议室
- 商店和精品店



## 产品规格:

型号	尺寸 (mm)	色温 (K)	光束角度	显色指数	灯具光通量 (lm)	灯具功效 (lm/w)	功率 (w)	净重 (g)
CET8509WW-C	549	3000	120°	80	860	95	9	150
CET8509WN-C	549	4000	120°	80	900	100	9	150
CET8509WC-C	549	6500	120°	80	990	110	9	150
CET8513WW-C	1149	3000	120°	80	1240	95	13	450
CET8513WN-C	1149	4000	120°	80	1300	100	13	450
CET8513WC-C	1149	6500	120°	80	1430	110	13	450
CET8518WW-C	1149	3000	120°	80	1710	95	18	450
CET8518WN-C	1149	4000	120°	80	1800	100	18	450
CET8518WC-C	1149	6500	120°	80	1980	110	18	450

## 产品特性:

- 输入电压: AC176~264V50/60Hz
- 功率因数: 0.9
- 工作温度: -20~50°C
- LED光源: 台湾SMD LED /三星
- 寿命: 50,000小时(40°C)
- RAL编号: 9006银
- 外壳材料: 铝和透明的聚碳酸酯

## 安装手册:

