

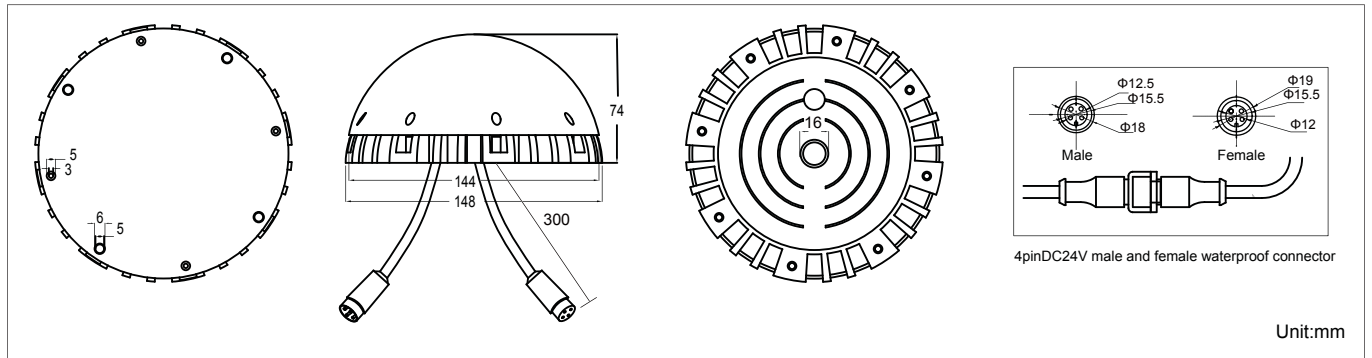
# LED DMX Pixel Light 5W Panama Series



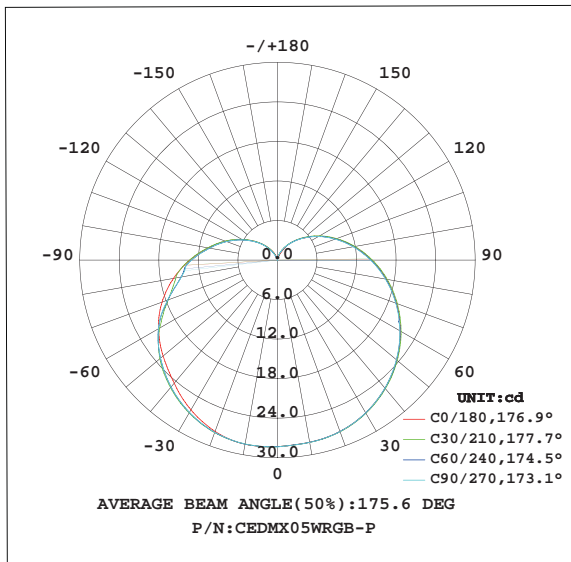
LED DMX Pixel Light 5W Panama Series



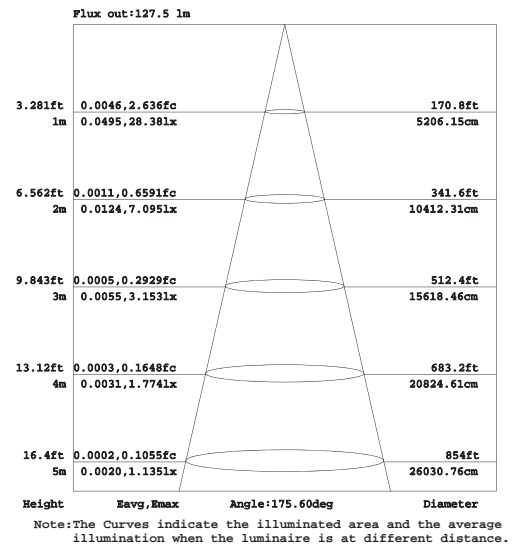
## Product Dimensions:



## Luminous Intensity Distribution Diagram:



## Lux Distribution:



## Manufacturing Quality Standard:

- ISO 9001:2008

## LED Luminaire Standard:

- EN/IEC 60598-1
- EN/IEC 60598-2-1
- EN/IEC 60598-2-2
- EN/IEC 60529
- EN/IEC 62471-2
- IEC 62612
- EN/IEC 60968
- IEC 62560
- EN/IEC 60061-1
- EN 13032-1
- EN 13032-2
- EN/IEC 62471
- EN/IEC 60825
- EN 60061-1

## Electronic Driver Standard:

- EN/IEC 61347-1
- EN/IEC 61347-2-13
- EN/IEC 62384
- EN/IEC 61000-3-2
- EN/IEC 61000-3-3
- EN/IEC 61547
- EN 55015(CISPR 15)

## LED Module Standard:

- IEC 62031
- IEC 60838-2-2

## RoHS Standard:

- EPA3050B
- EN 1122B
- IEC 62321
- EPA3052
- EPA3060A
- EPA7196A
- EPA3540C
- EPA8270D

## LED Luminaire Performance:

- LM-80-08
- Switching cycle:100,000x

## LED Light Photometric Standard:

- CIE; TM14; LM-75; IES; LDT; CEN; CIB

**Features:**

- Comply with standard DMX 512(Digital Multiplex) controller system
- Built-in DMX address IC for IP writing
- Display to 16,777,216 colors
- Frame per second:>100 FPS
- Dimmable range:0~255 steps
- 256 gradations for RGB individually
- Built-in constant current driver with PWM signal > 400Hz
- 6063 aluminum alloy housing with anode oxidation
- Convenient installation with unique brackets
- Optional milky tempered glass diffuser for uniform illumination
- Optional clear cover for precise light distribution system

**Applications:**

- Outdoor plaza
- The House of contours
- Bridges
- Landscape lighting

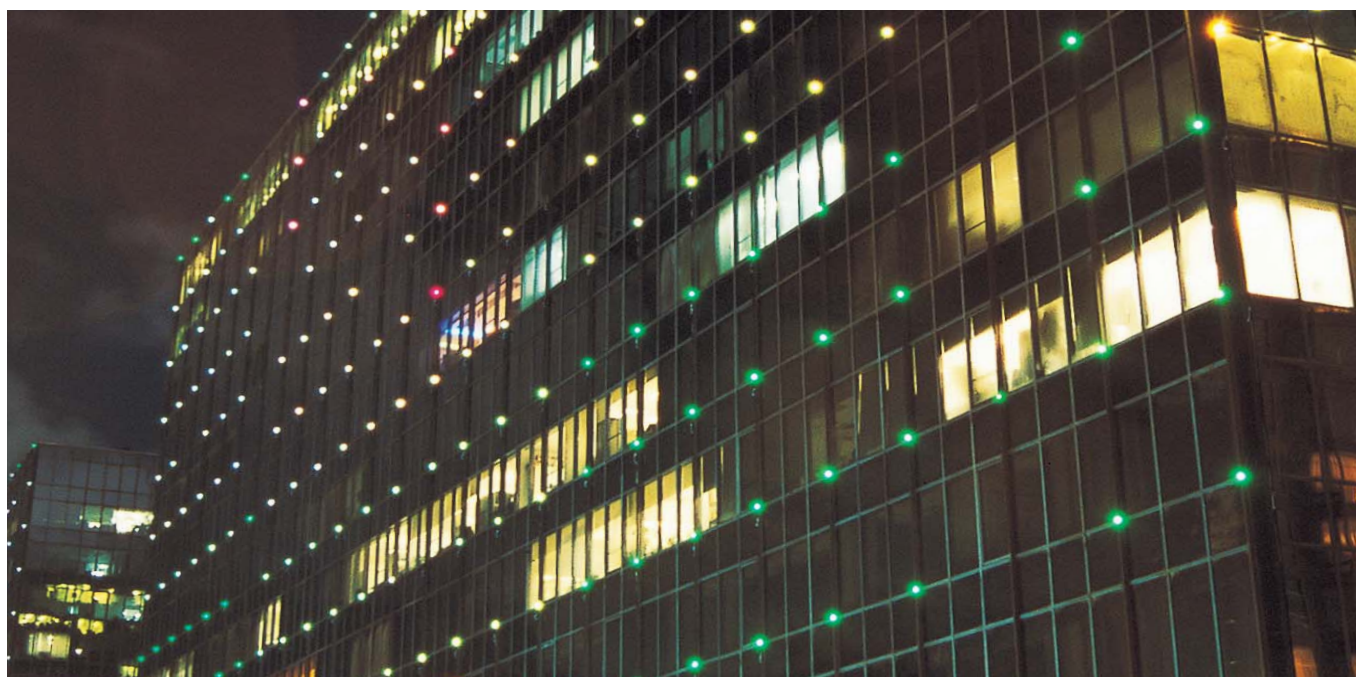


**Specifications:**

Part No	CCT	Luminaire Luminous Flux (lm)	Input (V)	Power (W)
CEDPL05WRGB-P	RGB	80	DC24	5
CEDPL05WW-P	3000K	180	DC24	5
CEDPL05WN-P	4000K	220	DC24	5
CEDPL05WC-P	6000K	280	DC24	5
CEDPL05WY-P	Yellow 590~595nm	130	DC24	5
CEDPL05WB-P	Blue 450~460nm	60	DC24	5
CEDPL05WR-P	Red 620~630nm	180	DC24	5
CEDPL05WG-P	Green 520~530nm	280	DC24	5

**Products Characteristic:**

- Control Protocol:DMX 512
- Operating Temperature: -20°C ~ 50°C
- House Material:Aluminum / PC
- Body Color:White
- LED Type:Taiwan or Samsung
- Net Weight:450g





Off-line DMX Controllers

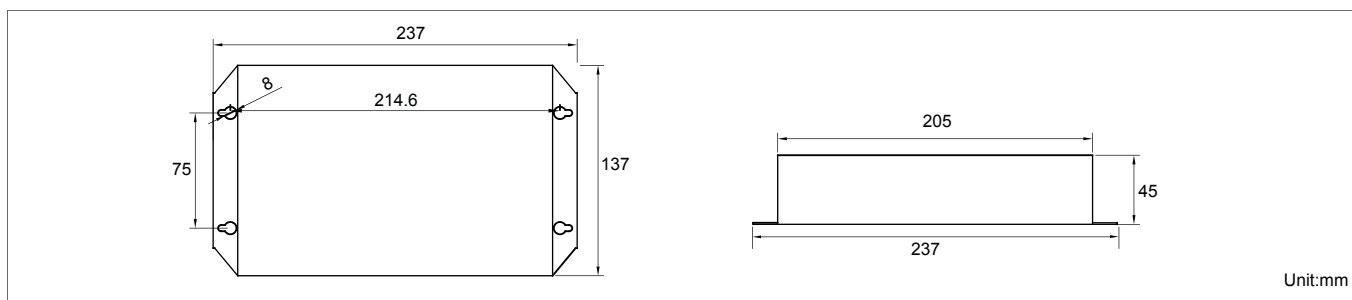


P/N:DMXMC Master Controller

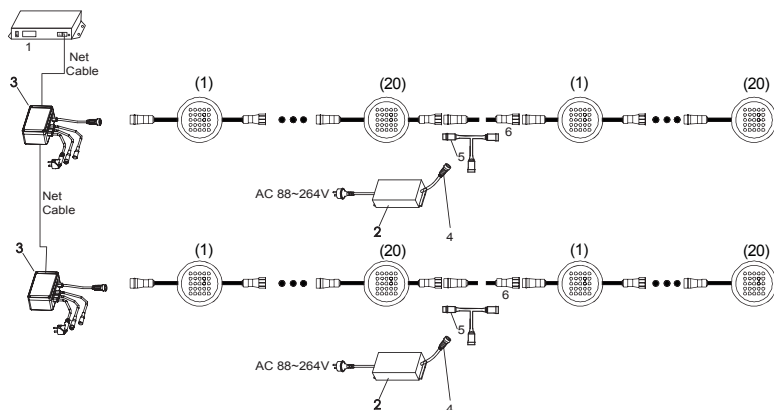


P/N:DMXSC Sub-Controller

DMXMC & DMXSC Product Dimensions:

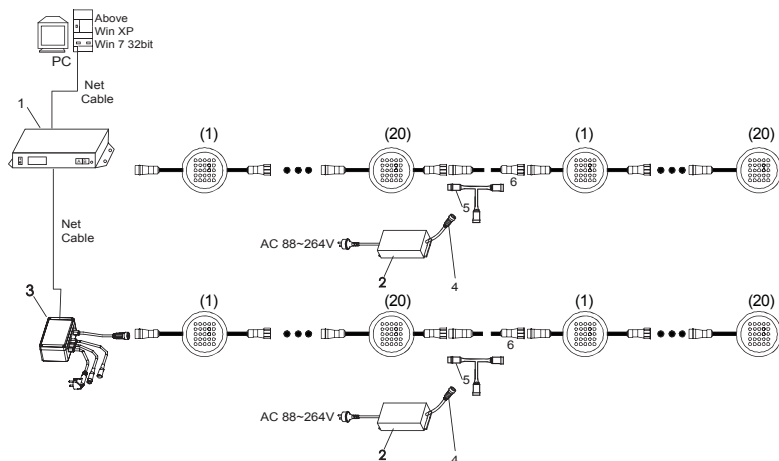


Schematic Diagram--Off-line Control



1. Master controller (DMXMC )
2. Switching power supply(DC24V)
3. Sub controller (DMXSC)
4. 5 Pin power female connector IP65 (Φ20mm)
5. P/N:C-5PIN-T-2MIF
6. 5 Pin end cap IP65 (Φ18~20mm)

Schematic Diagram--Computer control



1. Master controller (DMXMC )
2. Switching power supply(DC24V)
3. Sub controller (DMXSC)
4. 5 Pin power female connector IP65 (Φ20mm)
5. P/N:C-5PIN-T-2MIF
6. 5 Pin end cap IP65 (Φ18~20mm)

# LED DMX Pixel Light 5W Panama Series

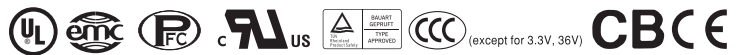


LED DMX Pixel Light 5W  
Panama Series



### ■ Features :

- Universal AC input / Full range
- Built-in active PFC function, PF>0.95
- Protections: Short circuit / Overload / Over voltage / Over temperature
- Forced air cooling by built-in DC Fan
- Built-in fan speed control
- Fixed switching frequency at 100KHz
- 3 years warranty



### ■ Specification

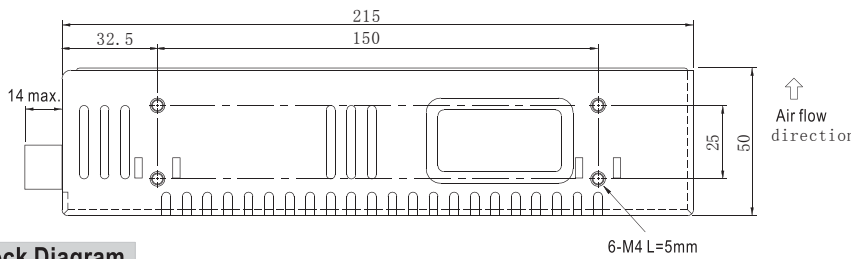
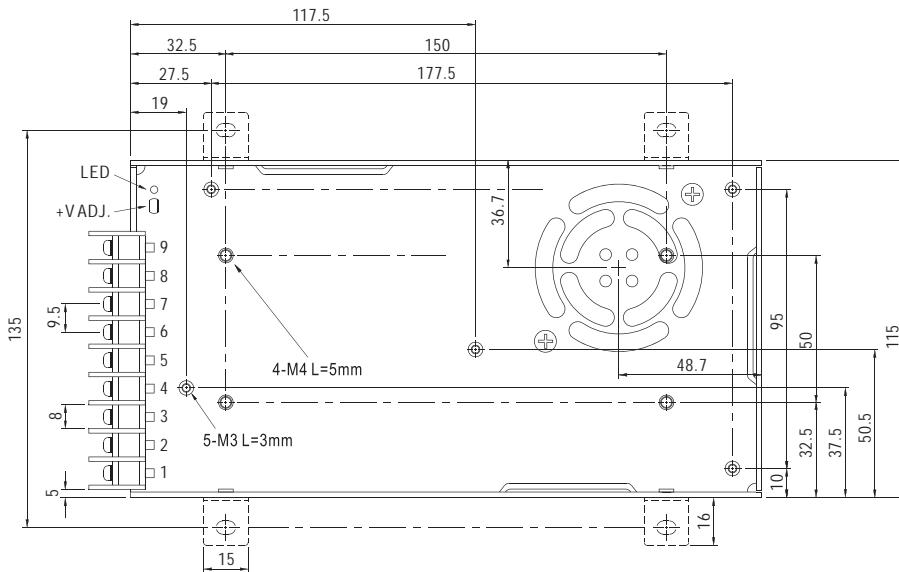
MODEL		SP-320-24		
OUTPUT	DC VOLTAGE	24V		
	RATED CURRENT	13A		
	CURRENT RANGE	0~13A		
	RATED POWER	312A		
	RIPPLE & NOISE (max.)	150mVp-p		
	VOLTAGE ADJ. RANGE	20~26.4		
	VOLTAGE TOLERANCE	±1.0%		
	LINE REGULATION	±0.2%		
	LOAD REGULATION	±0.5%		
	SETUP, RISE TIME	800ms, 50ms/230VAC	2500ms, 50ms/115VAC at full load	
	HOLD UP TIME (Typ.)	16ms/230VAC	16ms/115VAC at full load	
INPUT	VOLTAGE RANGE	88 ~ 264VAC	124 ~ 370VDC	
	FREQUENCY RANGE	47 ~ 63Hz		
	POWER FACTOR (Typ.)	PF>0.95/230VAC	PF>0.98/115VAC at full load	
	EFFICIENCY (Typ.)	87%		
	AC CURRENT (Typ.)	115VAC	5A	
		230VAC	2.5A	
INRUSH CURRENT (Typ.)	20A/115VAC	40A/230VAC		
LEAKAGE CURRENT	<1mA / 240VAC			
PROTECTION	OVERLOAD	105 ~ 135% rated output power Protection type : Hiccup mode, recovers automatically after fault condition is removed		
	OVER VOLTAGE	27.6 ~ 32.4V Protection type : Shut down o/p voltage, re-power on to recover		
	OVER TEMPERATURE	80°C ±5°C (70°C ±5°C 3.3V,5V only) (TSW1 : detect on heatsink of power transistor) Protection type : Shut down o/p voltage, recovers automatically after temperature goes down		
ENVIRONMENT	WORKING TEMP.	-20 ~ +65°C (Refer to "Derating Curve")		
	WORKING HUMIDITY	20 ~ 90% RH non-condensing		
	STORAGE TEMP., HUMIDITY	-40 ~ +85°C, 10 ~ 95% RH		
	TEMP. COEFFICIENT	±0.03%/°C (0 ~ 50°C)		
SAFETY & EMC (Note 4)	VIBRATION	10 ~ 500Hz, 2G 10min./1cycle, 60min. each along X, Y, Z axes		
	SAFETY STANDARDS	UL60950-1, TUV EN60950-1, CCC GB4943(except for 3.3V, 36V) approved		
	WITHSTAND VOLTAGE	I/P-O/P:3KVAC I/P-FG:1.5KVAC O/P-FG:0.5KVAC		
	ISOLATION RESISTANCE	I/P-O/P, I/P-FG, O/P-FG:100M Ohms / 500VDC / 25°C / 70% RH		
	EMC EMISSION	Compliance to EN55022 (CISPR22) Class B, EN61000-3-2-3		
OTHERS	EMC IMMUNITY	Compliance to EN61000-4-2,3,4,5,6,8,11, EN55024, light industry level, criteria A		
	MTBF	207K hrs min. MIL-HDBK-217F (25°C)		
	DIMENSION	215*115*50mm (L*W*H)		
	PACKING	1.1Kg, 12pcs/14Kg/0.92CUFT		

# LED DMX Pixel Light 5W Panama Series



## Mechanical Specification

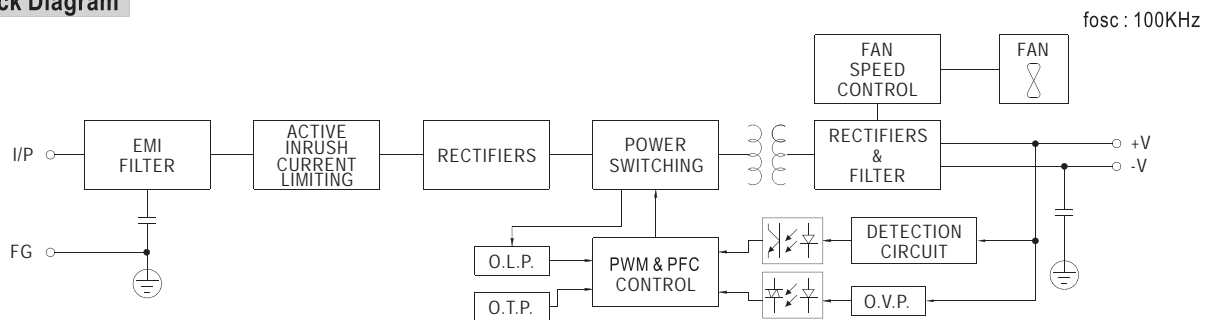
Case No. 912G Unit:mm



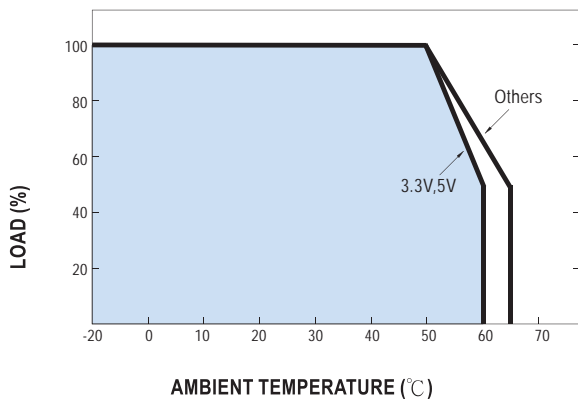
Terminal Pin No. Assignment :

Pin No.	Assignment	Pin No.	Assignment
1	AC/L	4~6	DC OUTPUT -V
2	AC/N	7~9	DC OUTPUT +V
3	FG $\perp$		

## Block Diagram



## Derating Curve



## Static Characteristics

