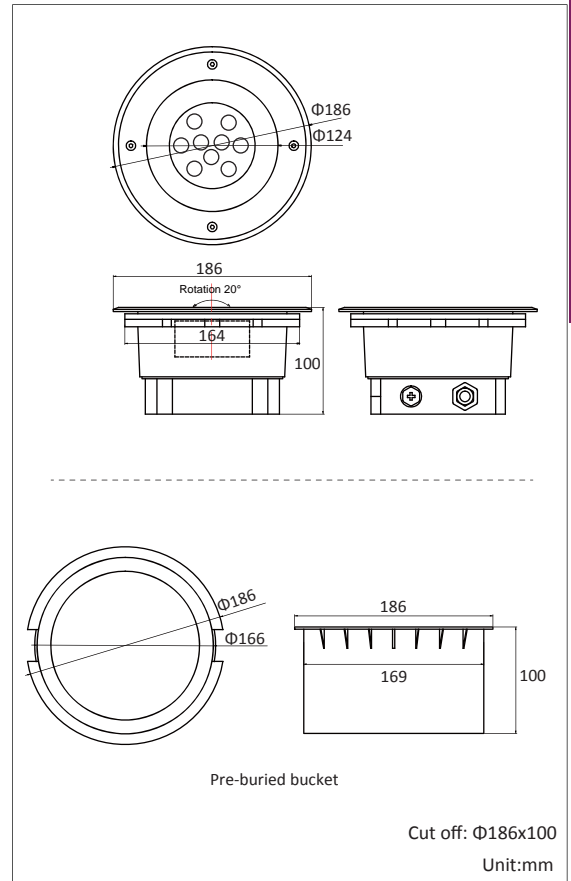
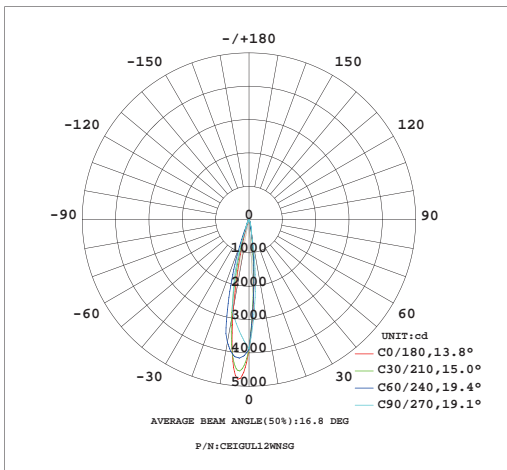




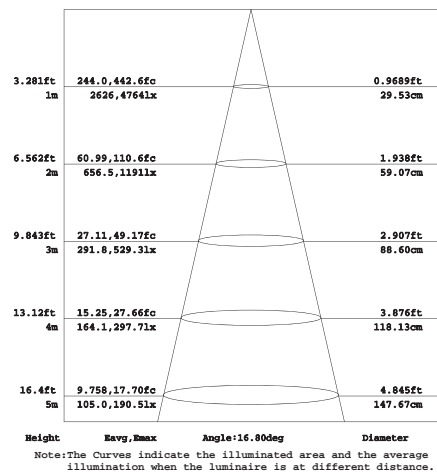
Product Dimensions:



Luminous Intensity Distribution Diagram:



Lux Distribution:



Manufacturing Quality Standard:

- ISO 9001:2008

LED Luminaire Standard:

- EN/IEC 60598-1
- EN/IEC 60598-2-1
- EN/IEC 60598-2-2
- EN/IEC 60529
- EN/IEC 62471-2
- IEC 62612
- EN/IEC 60968
- IEC 62560
- EN/IEC 60061-1
- EN 13032-1
- EN 13032-2
- EN/IEC 62471
- EN/IEC 60825
- EN 60061-1

LED Module Standard:

- IEC 62031
- IEC 60838-2-2

RoHS Standard:

- EPA3050B
- EN 1122B
- IEC 62321
- EPA3052
- EPA3060A
- EPA7196A
- EPA3540C
- EPA8270D

Electronic Driver Standard:

- EN/IEC 61347-1
- EN/IEC 61347-2-13
- EN/IEC 62384
- EN/IEC 61000-3-2
- EN/IEC 61000-3-3
- EN/IEC 61547
- EN 55015(CISPR 15)

LED Light Photometric Standard:

- CIE; TM14; LM-75; IES; LDT; CEN; CIB

LED Luminaire Performance:

- LM-80-08
- Switching cycle:100,000x

## Features:

- Excellent design in waterproof IP67
- 316# standard stainless steel frame and fastness part
- High-pure die cast aluminum body with electrostatic powder coating
- 8mm thickness tempered glass
- Silicon seal gasket
- PMMA optical level lens for light distribution
- Integral IP65 constant current power supply
- The power supply housing and LED is designed separately, good for maintenance
- With high shock bear ability, the tempered glass can bear 10,000 N force.

## Applications:

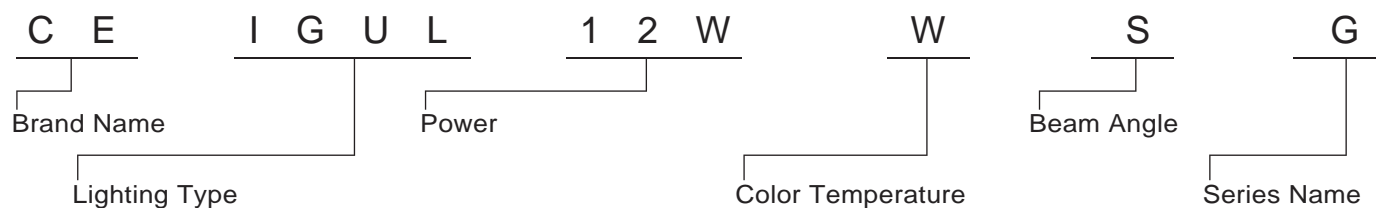
- Road
- Sculpture
- Walkway
- Park
- Clump
- Bridge



## Specifications:

Power	12W / 20W
Input Voltage	AC 100~240V 50/60Hz
Qty of LEDs	9PCS
Beam Angle	17°
Color Rendering Index	80
Housing Materials	316# Stainless Steel / Tempered Glass
Luminaire Efficacy	* 55lm/w (3000K), * 60lm/w (4000K), * 65lm/w (5000K), * 70lm/w (6500K)
LED Source Efficacy	* 100lm/w (3000K), * 110lm/w (4000K), * 115m/w (5000K), * 120lm/w (6500K)
Operating Temperature	-20~50°C
LED Source	CREE
Life Time	50,000 Hours at Ta=40°C
Humidity	10%~90%RH
Net Weight	2.1kg

## Ordering Part No.:



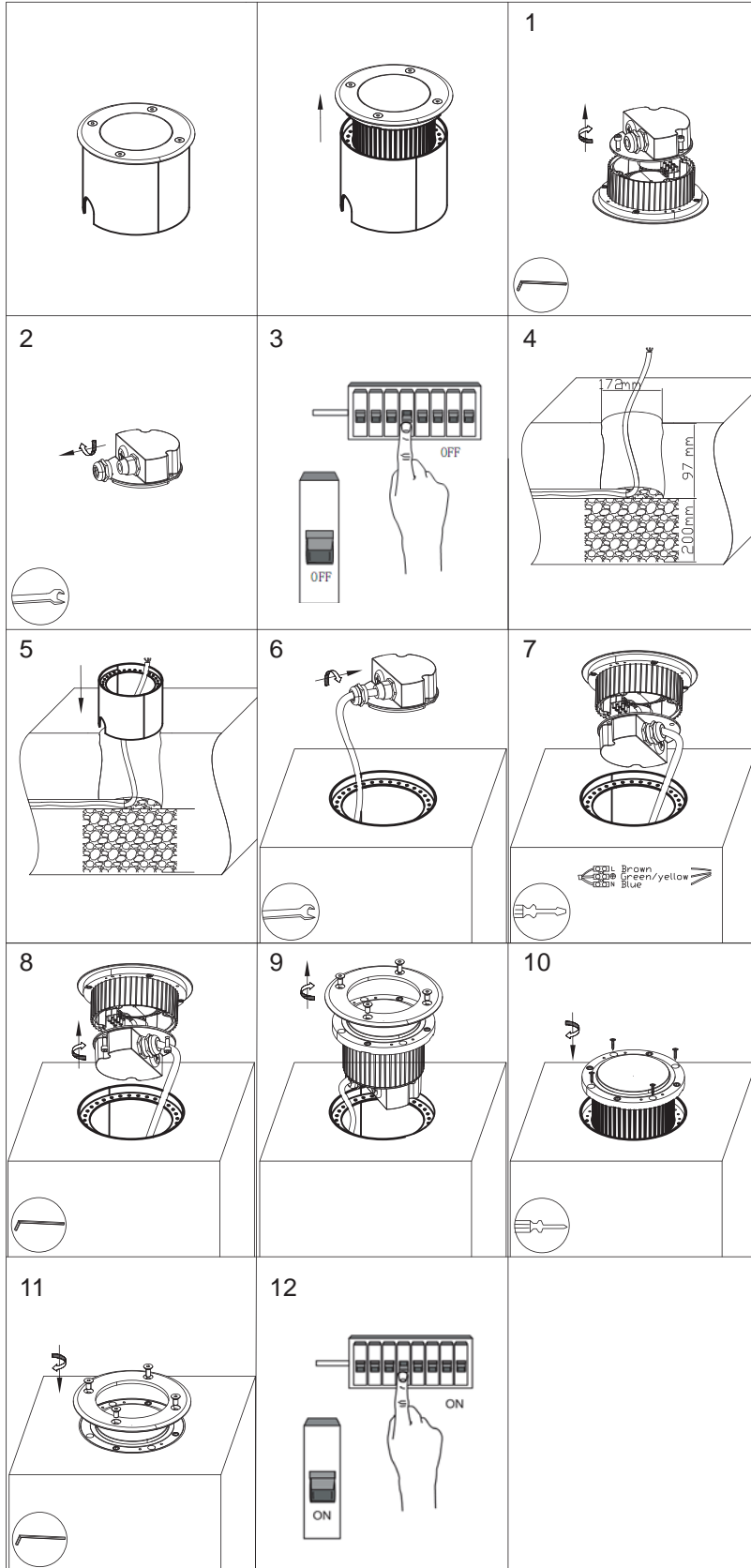
Brand Name	Lighting Type	Power	Color Temperature	Beam Angle	Series Name
CE: CELEX	IGUL: In-Ground Up-Light	12W 20W	W: 3000K N: 4000K D: 5000K C: 6500K	S: 17°	G: GEA Series

# LED In-Ground Up-Light GEA Series



## Installation Guide:

LED In-Ground Up-Light GEA Series



Parts supplied	
	x1
	x2
	x1
	x1
	x4
	x1

Parts not supplied	
	x1
	x1
	x1